

## Registration Form

Title \_\_\_\_\_ Forename \_\_\_\_\_

Surname \_\_\_\_\_

Job Title \_\_\_\_\_

Address for delivery of workbook \_\_\_\_\_

\_\_\_\_\_

\_\_\_\_\_

Hospital \_\_\_\_\_

Daytime Phone \_\_\_\_\_ Fax \_\_\_\_\_

Email \_\_\_\_\_

### Payment Options

BACS (UK only)  ICIS Member £365

IBAN-SWIFT/BIC (all non-UK payments)  ICIS Non-Member £405

Register Online  ICIS Membership £90

Paypal / Credit card  Workbook postage

Please note that delivery of your workbook will be subject to an additional charge as follows:  
UK £15/ Europe £30/ Rest of world £45

Total £



### BACS details

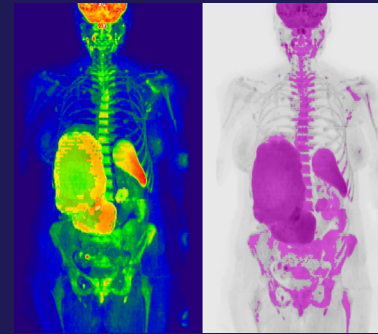
Account Name: International Cancer Imaging Society (ICIS)  
Barclay Bank plc, London, W1A 3AL

Account Number: 90164879  
Sort Code: 20-69-15

IBAN: GB82 BUKB 2069 1590 1648 79  
SWIFT: BUKBGB22



Online  
Learning



## Masterclass in Oncological Whole-Body MRI, Second Edition

Tuesday 2 &  
Wednesday 3 July 2024

[icimagingociety.org.uk](http://icimagingociety.org.uk)

Society Corporate Supporters



This second edition Masterclass in Oncological Whole-Body MRI will be delivered online, over two half-days as a workstation-based teaching course. We will provide a foundational understanding of this specialised technique, imaging optimisation and application for both disease detection and incidental findings in the setting of cancer screening. A focus on myeloma will also highlight patterns of disease.

The comparative value of utilising WB-MRI for the detection of breast and prostate cancer will be demonstrated, along with its use for response assessment in bone disease. Our expert faculty have extensive clinical knowledge and experience of WB-MRI, and delegates will benefit from mentored hands-on case-based learning with individual workstations. Between 35-40 brand new cases will be reviewed, each chosen to illustrate specific learning points, all summarised in a comprehensive workbook which will be posted to your specified address before the course.

To achieve optimum experience from this interactive course, two screens, one with a camera are required. Please refer to the joining instructions for full details.

## Learning objectives

- To learn how to perform and read WB-MRI scans for disease detection and response assessments.
- To understand how WB-MRI can help maintain health by early disease detection and disease characterisation using the ONCORADS standard.
- To discuss guidelines and benefits of WB-MRI in multiple myeloma using the MY-RADS standard.
- To learn about the detection and bone response benefits of WB-MRI in prostate and breast cancer using the MET-RADS standard.

## Key Features

- Mentored case-based learning of 35 – 40 cases.
- Each case chosen to illustrate specific learning points.
- Detailed workbook will be posted to your specified address before the course.

## Course Programme\*

### Tuesday 2 July

13:00	Technical test session / welcome & introduction
14:00	Session 1: Technique overview & reading: detection of disease and incidental findings
15:45	Break
16:00	Session 2: Disease detection in myeloma
17:45	Close

### Wednesday 3 July

13:00	Session 3: Detection uses in breast and prostate cancer
14:45	Break
15:00	Session 4: Response assessment for bone disease
16:45	Close

\* Times shown as BST

## Faculty

**Prof. Dow-Mu Koh.**  
The Royal Marsden Hospital, UK

**Prof. Giuseppe Petralia.**  
European Institute of Oncology,  
University of Milan, Italy

**Prof. Anwar Padhani.**  
Mount Vernon Cancer Centre, UK

**Prof. Christina Messiou.**  
The Royal Marsden Hospital, UK

**Dr. Nina Tunariu.**  
The Royal Marsden Hospital, UK

## Registration Fees

**ICIS members**  
£365 per person

**Non-members**  
£405 per person

Please note that delivery of your workbook will be subject to an additional charge as follows:

- UK £15
- Europe £30
- Rest of world £45

## How to Register

Register online by going to [icimatingsociety.org.uk](http://icimatingsociety.org.uk) and 'Computer Workshops' pages.

**Or**

Download this form and post to:

**ICIS, 41 Waddington Way,  
London, SE19 3UB.**

Please complete all registration details and indicate payment option.

**Full payment must be received by 2 June 2024.**

Registration will not be confirmed until full payment has been received.

## CPD

Attendees will receive a certificate with 7 CPD credits awarded according to the CPD scheme of the Royal College of Radiologists.

## ICIS Membership

ICIS membership is open to all individuals with an interest in cancer imaging for only £90 per year. Join ICIS today and benefit from reduced registration fees at ICIS teaching courses. Membership benefits include:

- Discounted registration fees for the Annual Teaching Course and ICIS interactive one day workshops.
- Access to our Members only section of the website where you can view our webinars, lectures from previous meetings, as well as all our scientific and educational posters.
- 20% discount on article processing fees for our journal Cancer Imaging.
- Save 20% on CRC Press radiology and oncology publications.

## Important information

Please complete all registration details. Full payment must be received by 2 June 2024. Registration will not be confirmed until full payment has been received.

Reservations are subject to availability and will be confirmed within one week from receipt of completed booking form and full payment. Refunds (minus an administration charge of £70) will only be made if written notification is received by 2 June 2024. Thereafter no refunds will be made.

Please refer to our Booking Terms & Conditions @ [www.icimatingsociety.org.uk/index.cfm?task=booking\\_terms](http://www.icimatingsociety.org.uk/index.cfm?task=booking_terms)

